



Event Space Hire

CORPORATE MEETING ROOMS
& CONFERENCE SPACES

the

CONTENTS

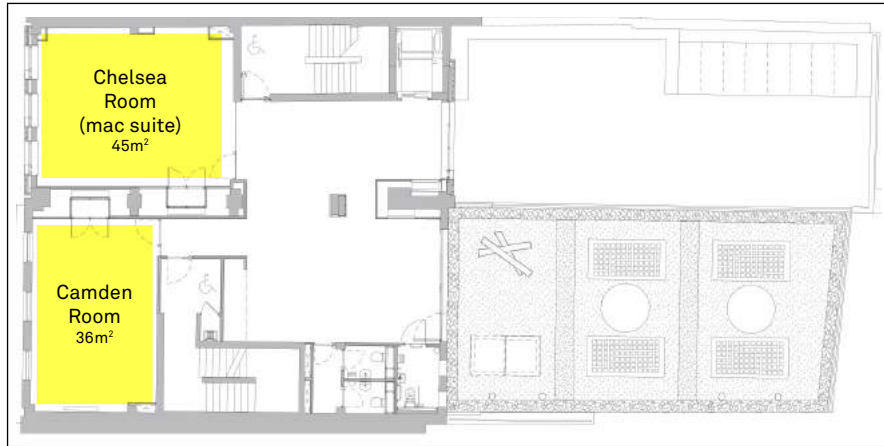
VENUE	3
FLOORPLANS	4
SOHO ROOM	5
SHOREDITCH ROOM	6
OLYMPIA & OVAL ROOMS.....	7
ROOF TERRACE	8
OSTERLEY & HOXTON ROOMS.....	9
HIGHBURY ROOM.....	10
LOCATION.....	11
RATES & CONTACTS	12
ADDITIONAL ITEMS.....	13
CATERERS	14

the
VENUE

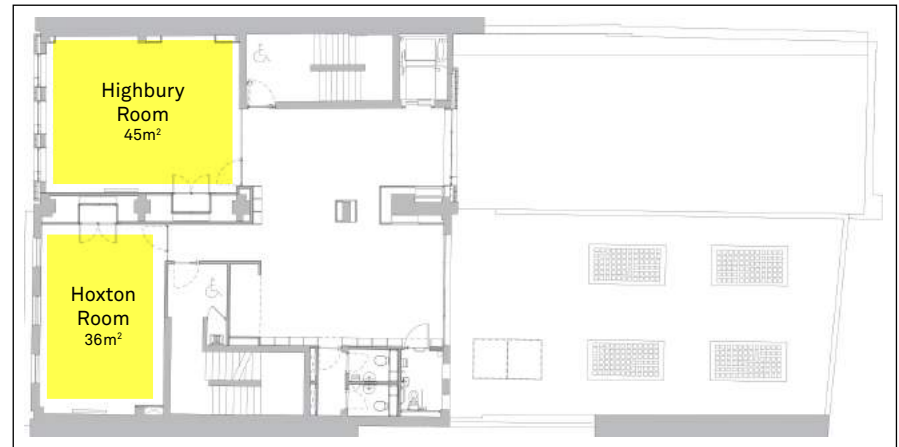


The Condé Nast College of Fashion & Design is a light, bright oasis of calm in the heart of London's Soho. The College boasts state-of-the-art technical facilities and a number of extremely flexible rooms and spaces that are available to hire. We are obviously somewhat restricted during term time but do please get in touch with any enquiries and we will be happy to assist you.

the
FLOORPLANS



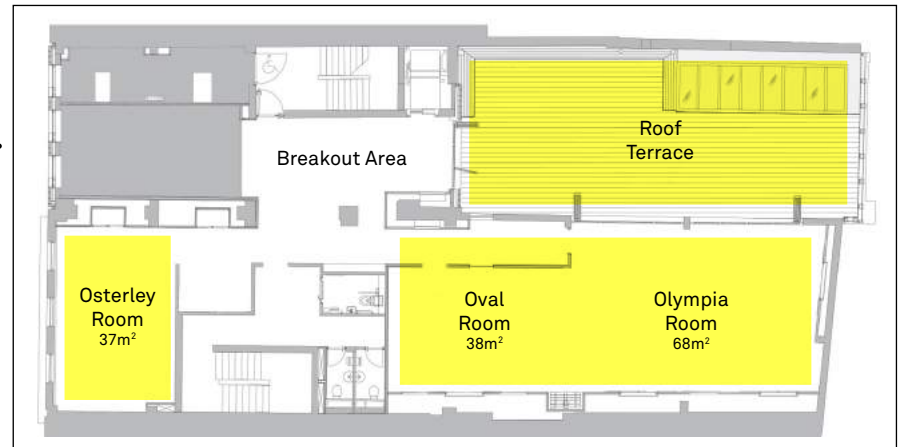
Second Floor



Third Floor



Ground Floor
304m²



First Floor
202m²
(excluding terrace)

the

SOHO ROOM



- Ground floor
- This room can be used as a lecture space, meeting space or for events
- Capacity 120 seated, 150 standing
- Surround sound system
- 2 x 65 inch LED monitors
- 1 x 3.5 metre wide projector
- All controlled by a AMX touch panel

Imagery/videos/presentations can be displayed on all 3 screens. Sources include a built in Macintosh computer, wired HDMI and lectern connections (for personal computers), Apple TVs, Blu-Ray Player, and many others.

Soho 115m²

the

SHOREDITCH ROOM



- Ground Floor (off Soho Room)
- This room can be used for meetings, a catering space or as a cloakroom
- Capacity 20 seated
- 55 inch LED monitor

Shoreditch 55m²

the

OLYMPIA & OVAL ROOMS



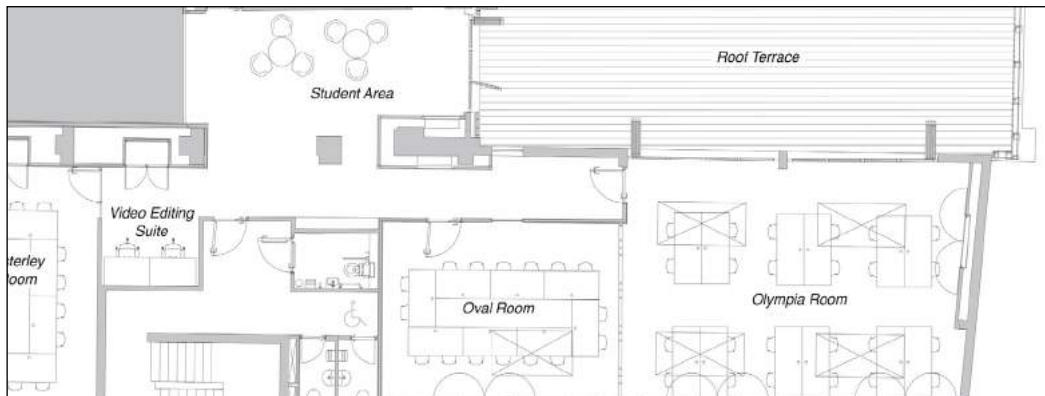
- First Floor
- This room can be used as a meeting room or event space
- Capacity 80 seated lecture style
- 4 x 55 inch LED monitor
- These two rooms - which can be separated by folding doors - also open out onto the roof terrace.

Everything works seamlessly to allow for plug-and-play technology, making presentations stress-free. Presentations can be displayed on one screen, whilst Apple TVs can create the relevant background or atmosphere for your meeting.

Olympia 68m² / Oval 38m²

the

ROOF TERRACE



- First Floor
- An outdoor event space
- Glass doors open from the Olympia Room to the Roof Terrace creating a unique venue
- Capacity 110 including rooms
- Outdoor furniture, speakers and lights
- Power and network points

the

OSTERLEY & HOXTON ROOMS



- First & Third Floor
- These rooms can be used as meeting spaces
- Capacity 15 seated
- 55 inch LED monitor
- Multiple inputs for PC and Mac laptops

Osterley 37m² / Hoxton 36m²

the

HIGHBURY ROOM



- Third Floor
- This room can be used as a meeting area
- Capacity 30 seated
- 55 inch LED monitor
- Multiple inputs for PC & Laptops

Highbury 45m²

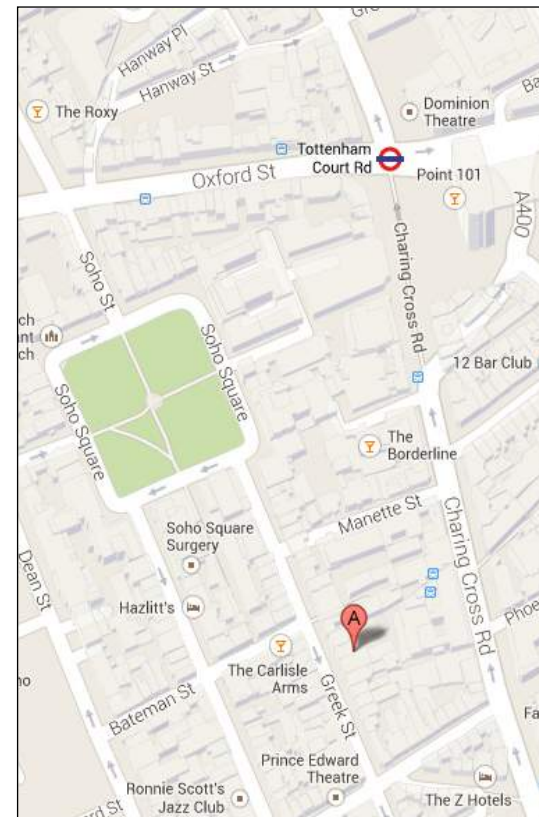
the

LOCATION



16 - 17 Greek Street
Soho
London
W1 4DR

Underground Stations:
Tottenham Court Road, Oxford
Circus, Leicester Square and
Picadilly Circus



the

RATES & CONTACTS

Oval, Osterley, Hoxton & Camden Rooms

£70 per hour

Shoreditch & Highbury Rooms

£100 per hour

Oval & Olympia Room

£150 per hour

Roof Terrace

£80 per hour

(must be hired with Oval & Olympia)

Soho Room

£275 per hour

Ground Floor: Soho, Hallway & Breakout

£325 per hour

Whole Ground Floor

£450 per hour

Whole First Floor

£390 per hour

These rates do not include VAT

Please note that these rates are for skeleton room hire of the College only.

For venue hire enquiries please call: [020 7152 3435](tel:02071523435)
or email: dione.hyland@condenastcollege.ac.uk



optional

Equipment



Mannequin
£15 each per session
3 available



Clothing Rail
£15 each per session
2 available with 100 hangers



Flip Chart Stand
£20 each per session
7 available with pad



White Plinths
£20 per plinth per session
3 available (1 large, 1small)



Uplighters
£30 per light per session
12 available (red, blue & green)



Poser Table
£30 each per session
4 available



Belu Water
£2 per Glass Bottle
available on request

These rates do not include VAT

optional

CATERERS



Polished, contemporary and classic. Best for drinks and dinner parties on a larger scale and events with higher-end budgets.

Contact: Phoebe Breckman
phoebe.breckman@admirable-crichton.co.uk
0207 326 3813
www.admirable-crichton.co.uk



Boutique, creative and award winning. Best for larger scale events with higher-end budgets.

Contact: Katherine Perceval-Price
kathryn@the-recipe.co.uk
0207 033 4280
www.the-recipe.co.uk



Seasonal and exceptional food in an inspiring presentation. Best for larger scale events with higher-end budgets.

Contact: Alastair Moir
alastair@rocketfood.net
0207 622 2320
www.rocketfood.net



Creative, innovative and bespoke menu planning. Best for larger scale events and higher-end budgets.

Contact: Ami Walker
ami@thelondonkitchen.com
0203 267 1198
www.thelondonkitchen.com



Healthy and nutritious, specialising in any dietary requirements. Best for smaller scale events, meetings or parties.

Contact: Jessica Scott
jess@thenutritionkitchen.co.uk
07909 966 864
www.thenutritionkitchen.co.uk



Stylish cocktail bar with exceptional drinks and canapes. Best for bar set up and a wide range of drinks.

Contact: Kealan Finlay-Mulligan
kealan@sweetandchilli.com
0207 407 4430
www.sweetandchilli.com

For clients wishing to cater a more basic lunch, we suggest local companies such as Le Pain Quotdien, Paul's Bakery & Patisserie or Pret - a - Manager to name a few.